

Description

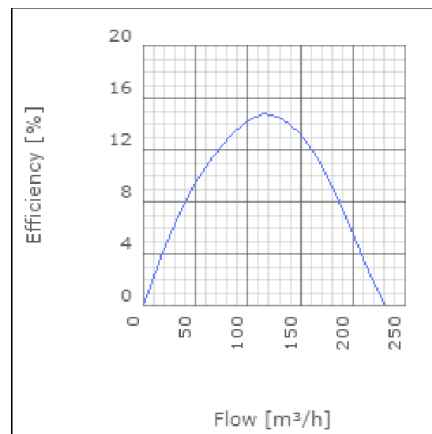
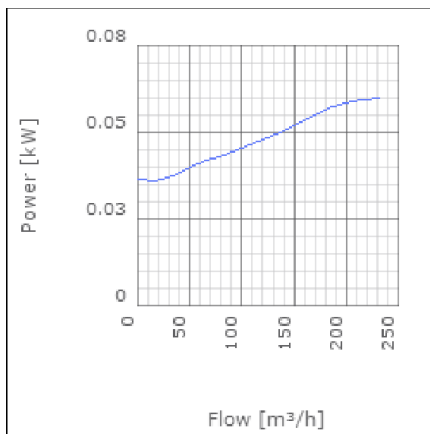
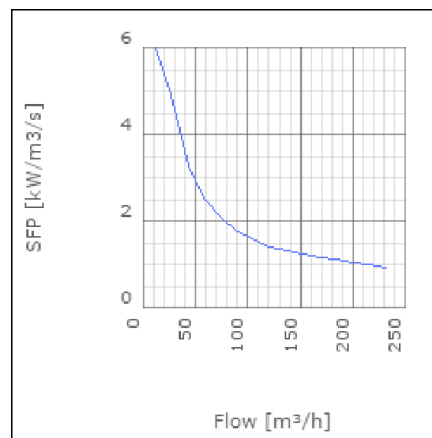
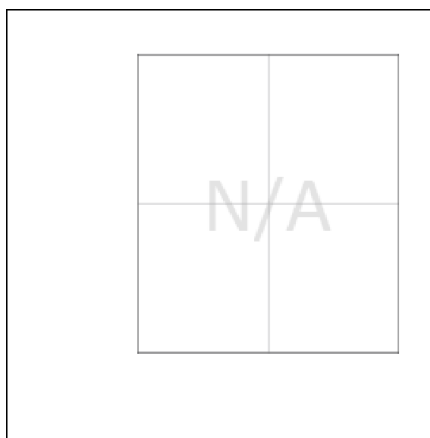
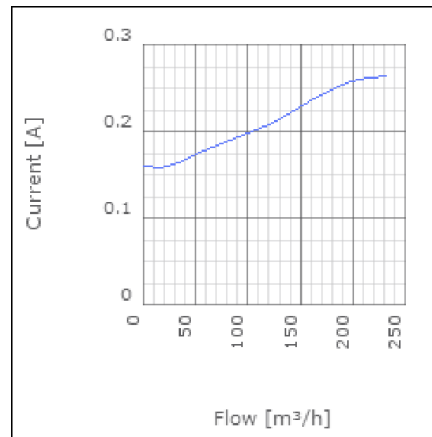
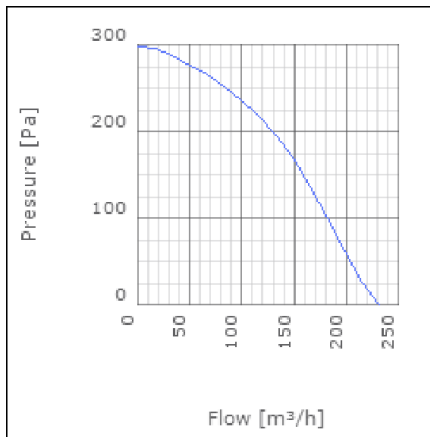
IRE is a range of insulated in-line centrifugal duct fans. They provide high pressure with low sound level. The IRE fans have good sound and fire insulation qualities provided by a 50mm pad of mineral wool. The high quality ball bearing mounted external rotor motors are maintenance free. They can be speed controlled from 0-100% by voltage variation. All motors are protected by approved thermo contacts. All 3-phase motors have ready fitted thermo contact leads for alarm functions etc. The fans have a strong galvanized steel housing incorporating a swing out design of the fan motor and impeller for easy cleaning and inspection.



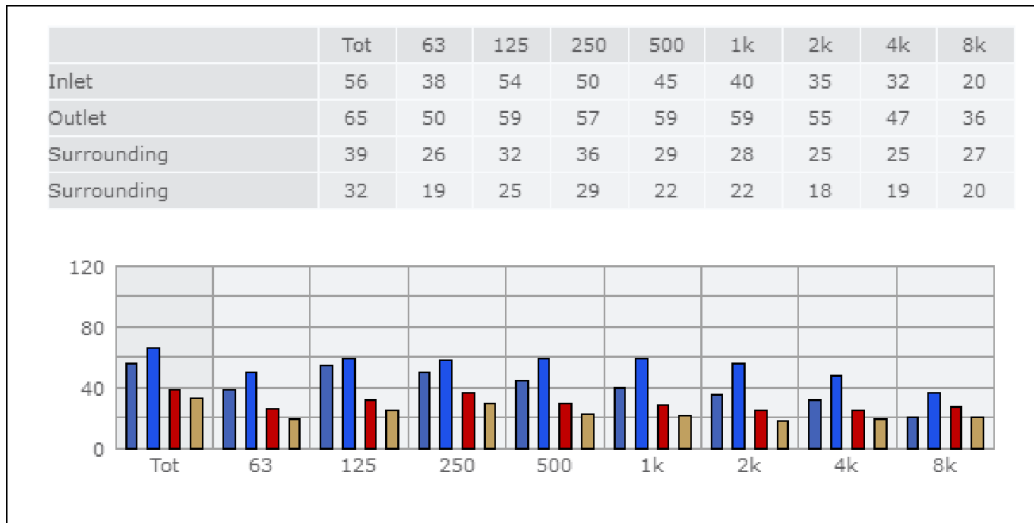
Technical data

Parameter	Value	Unit
Voltage	230	V
Phase	1	~
Frequency	50	Hz
Power	0.06	kW
Current	0.27	A
R.p.m.	1130	r/m
Max. temperature of transported air	80	°C
Max. temperature of transported air when speed-controlled	80	°C
Sound pressure level at 3 m	28	dB(A)
Length	400	mm
Width	365	mm
Height	245	mm
Weight	12	kg
Enclosure class, motor	44	IP
Insulation class, motor	F	
Capacitor	4	µF
Duct connection	ø125 mm	

Diagrams



Sound



Parameter

Distance: 3.000
 Propagation type: Hemi-spherical
 Equivalent absorption area: 20.00

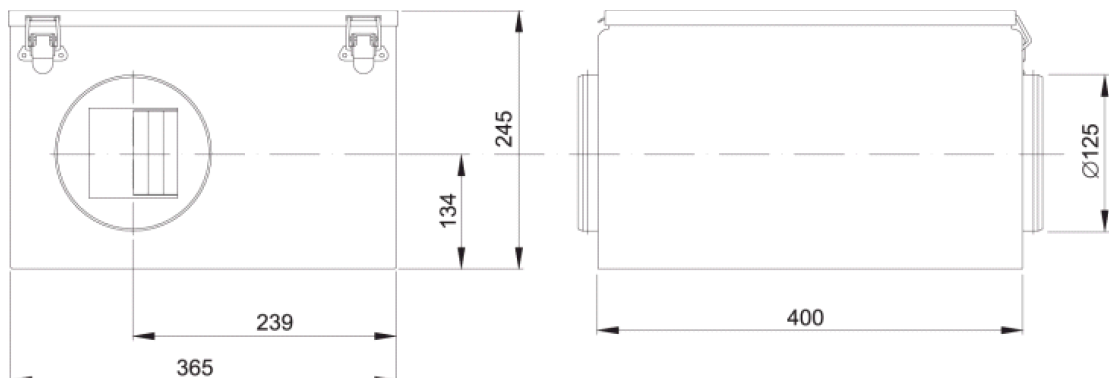
Checked point

Flow 107.914m³/h
 Static pressure 224Pa

Working point

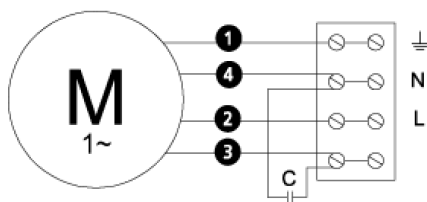
Flow 108.686m³/h
 Static Pressure 228Pa
 Power 0.05kW
 Speed 0r/m
 Current 0.2A
 Voltage 230V
 Efficiency 14.686%
 SFP 0kW/m³/s

Dimensions



Wiring diagram

4040002



(M) = Fan Motor

(M1) = Fan Motor

(M2) = Fan Motor

(M3) = Rotor Motor

1 = Yellow/Green

2 = Black

3 = Blue

4 = Brown

5 = White (TW)

6 = Orange

7 = Grey

8 = Red

9 = Green

10 = Violet

Accessories

ETFV-94A

FRE 6

VRDE 1,5

VRS 0,5

VRTEC

Electrical accessories

FLF 125

FLK 100

BSV 125

YG 125

LDC 125